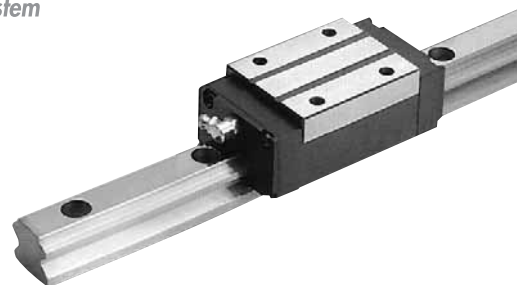
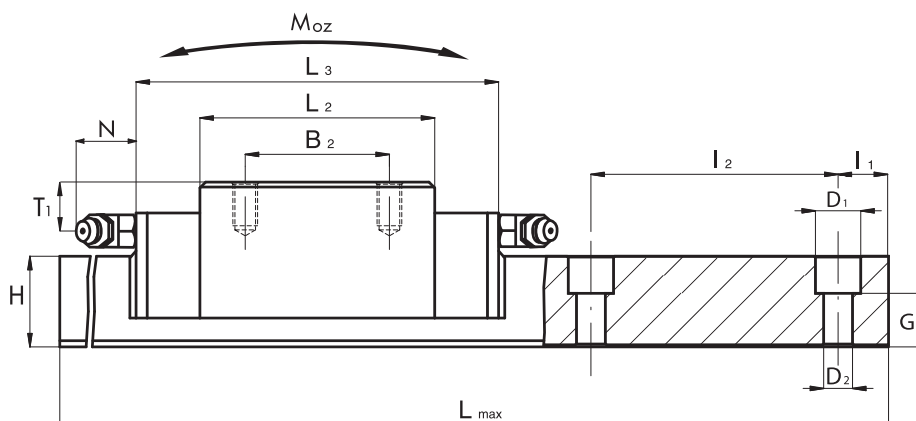
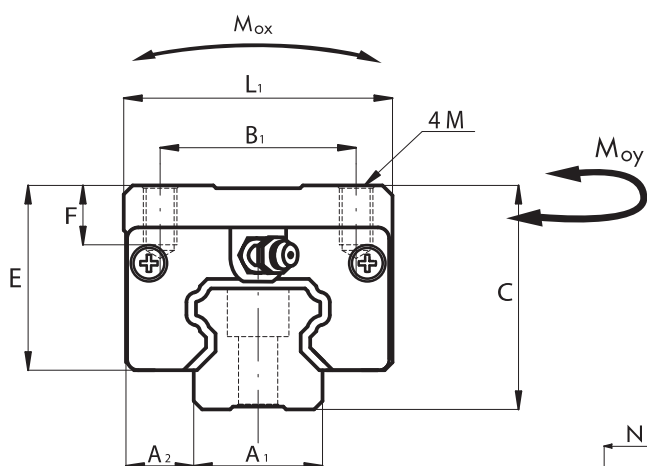




SNC

Sistemi di guida lineari a ricircolo di sfere - Linear rail system



Carrello Block	Dimensioni / Dimensions															
	Guida Rail	Tappo fori guida Rail holes cup	A ₁ [mm]	A ₂ [mm]	B ₁ [mm]	B ₂ [mm]	M [mm]	C [mm]	E [mm]	F [mm]	H [mm]	I ₁ ⁽¹⁾ [mm]	I ₂ [mm]	L ₁ [mm]	L ₂ [mm]	L ₃ [mm]
SNC 15	R15	C15	15	9.5	26	26	M4x6.4	28	23.4	6.4	14	20	60	34	40	66
SNC 20	R20	C20	20	12	32	36	M5x8	30	25	8	18	20	60	44	48.8	77.8
SNC 25	R25	C25	23	12.5	35	35	M6x9.6	40	33	9.6	22	20	60	48	57	88
SNC 30	R30	C30	28	16	40	40	M8x12.8	45	36	12.8	26	20	80	60	72	109
SNC 35	R35	C35	34	18	50	50	M8x12.8	55	45.5	12.8	29	20	80	70	80	119
SNC 45	R45	C45	45	20.5	60	60	M10x16	70	56	16	38	22.5	105	86	105	148.2
SNC 55	R55	C55	53	23.5	75	75	M12x19	80	65	19	38	30	120	100	121	170

Carrello Block	Dimensioni / Dimensions									Caratteristiche meccaniche Mechanical characteristics					Peso Weight	
	Guida Rail	Tappo fori guida Rail holes cup	Foro lub. Oil hole. [mm]	T1 [mm]	N [mm]	D ₁ [mm]	D ₂ [mm]	G [mm]	L _{max} [mm]	C ₀ [kN]	C [kN]	M _{0x} [Nxm]	M _{0y} [Nxm]	M _{0z} [Nxm]	Pattino Block [kg]	Rotaia Rail [kg/m]
SNC 15	R15	C15	∅3	8.3	5.3	7.5	4.5	8.7	4000	12.7	6.85	70	50	50	0.21	1.4
SNC 20	R20	C20	M6x1	7	16.6	9.5	6	9.5	4000	25.6	14.5	220	180	180	0.31	2.6
SNC 25	R25	C25	M6x1	11.8	16.6	11	7	13	4000	40	21.4	360	320	310	0.45	3.6
SNC 30	R30	C30	M6x1	10	16.6	14	9	14	4000	54.9	29.8	600	500	490	0.91	5.2
SNC 35	R35	C35	M6x1	15	16.6	14	9	17	4000	70.1	39.6	960	750	730	1.5	7.2
SNC 45	R45	C45	M8x1	18	16.6	20	14	21	4000	121	67.4	2160	1700	1680	2.3	12.3
SNC 55	R55	C55	M8x1	20	16.6	23	16	24	4000	171	99.4	3670	2930	2880	3.9	16.9

(1) Misura consigliata. Altre misure a richiesta. In mancanza di specifica indicazione la misura I1 sarà uguale per entrambe le estremità.

(1) Suggested dimension. Other dimensions on request. With no specific request, the I1 values on both ends will be the same.